

2020

2020 9

..... - 1 -  
..... - 1 -  
..... - 2 -  
..... - 2 -  
..... - 2 -  
..... - 4 -  
..... - 4 -  
..... - 4 -  
..... - 4 -  
..... - 5 -  
..... - 5 -  
..... - 5 -  
..... - 7 -  
..... - 7 -  
..... - 7 -  
..... - 8 -  
..... - 9 -  
..... - 10 -  
..... - 11 -  
..... - 11 -  
..... - 12 -  
..... - 12 -  
..... - 13 -  
..... - 16 -  
..... - 16 -  
..... - 18 -

..... - 23 -  
..... - 23 -  
..... - 23 -  
..... - 23 -  
..... - 26 -  
..... - 26 -  
..... - 28 -  
..... - 29 -  
..... - 29 -  
..... - 29 -  
..... - 30 -  
..... - 32 -  
..... - 32 -  
..... - 32 -  
..... - 33 -  
..... - 36 -  
..... - 37 -  
..... - 37 -  
..... - 44 -  
..... - 46 -  
..... - 49 -  
..... - 49 -  
..... - 49 -  
..... - 49 -  
..... - 50 -

			914	34.15
		8.47	21.56	,
56.65	1		1 20	
			12446	
	854		595	
			65	
51		106		7
	3		5	
2		4	1+X	
39		2		9025.9
,		40	186	
	1		1	
		1		1
	1		1	1
		6		
2				



800 1.8 20  
3000 20

87%

2

2017 28713.61 2018  
 28332.83 2019 31758.17

2.1 2017 -2019 ( )



2016 1.1

2017 2018 2019 1.2

2016 18057.4 18057.4

16591.3 91.88% 2017 22812.09

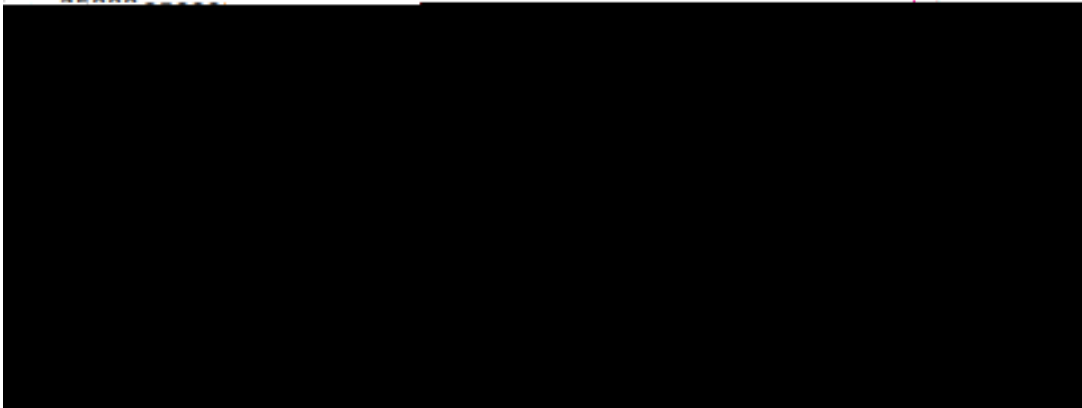
21922.35 20330.84

92.74% 2018 7 10251.33

10321.01	2019	22600.85	
5707.62		12113.44	
		4736.99	42.80

		135	145
162	186		5962.12
9025.9		20126	372
		8935.65	

4194		0.42
6.47		



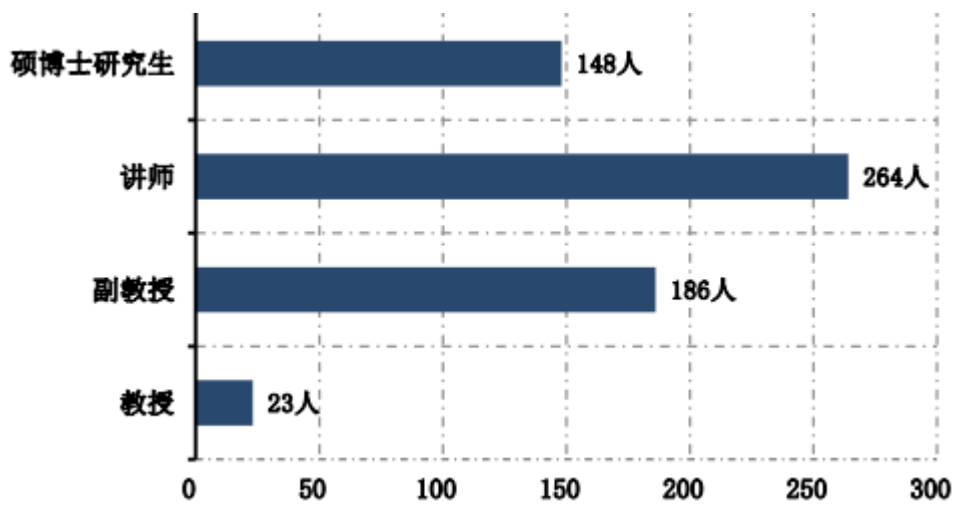
2.1

874.35



300Mbps	1000Mbps		1805
2220		1740	2989
	400GB	738GB	
7500GB	8108GB		6823GB
101			
		1	1
	400	+	
874.35			
			315

			854	
	595		23	
186		148		1
	5	91		187
	348	5		3
		5	1	
2				



3.1

2

3

"

"

348

58.49%

12

283

45

40

( )

8

4



2019

2019

2019

53

2019 17

+

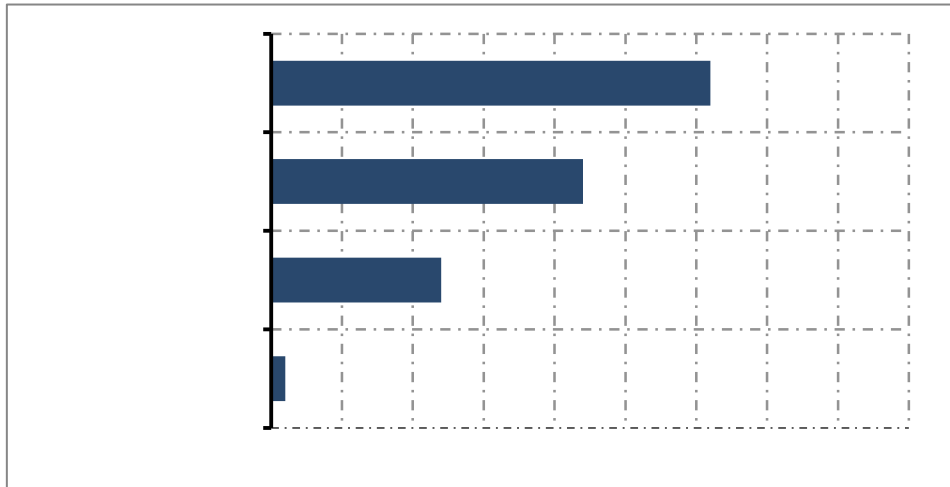
17

37

70

1700

		2019		
	1			1
			4	43
		22		
				2019
			43	12
	31	2019		
		3		
	2	3	5	
1	2018			
				+
			22	
				2018
			2	



4.1 2019

**1.**

		26		13
8		10		
32		8		10
5				
12				



2019

2019

2

4

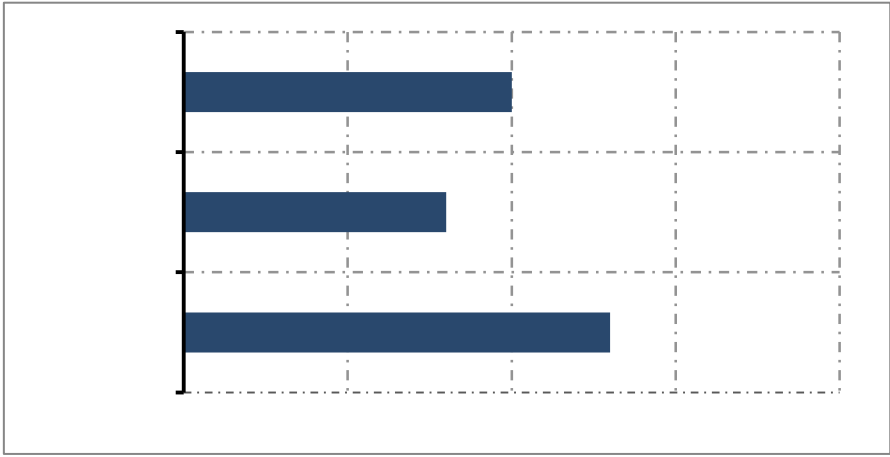
2 1

1

N+1

2019

22



4.2

2.

+

+

400

10

2019

2019

10

5

200

17

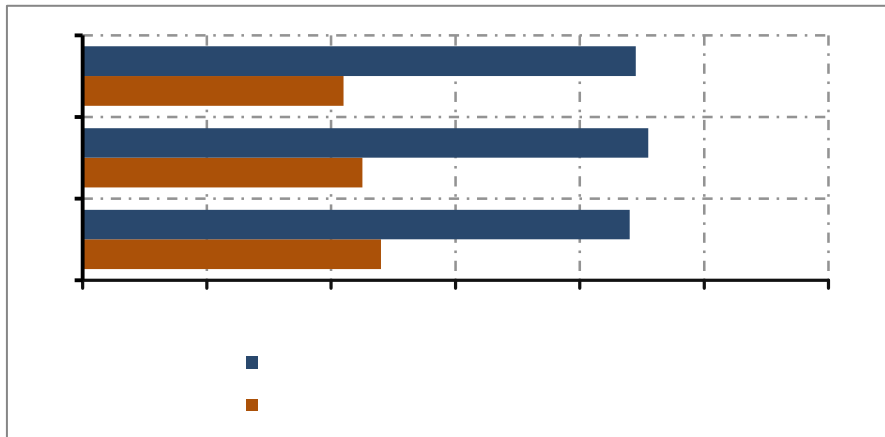
70

+

	2019		3
145		8	186
	9025.9	2018	
874.32	20126		372
	8935.65		
4194	0.42		6.47

30

178



4.3 2017-2019

186

8

2019

3420

1402

59.38%

20	2019	842	7
			18
	7000		
29			2
15	22	45	
	42		

4.4 2016-2019

**1.**

2

8

2019

9600

30

32

3868

81

2.

15  
4800  
1817.6  
1  
943  
600  
2000  
4  
3  
95%  
98%  
3  
300  
2019  
30  
GS  
GS  
15

**3.**

	2019	27		
			31	
		26		
7		1	1	
2			2	
	1			
5				
1	1		5	9
		7		
13		1200		3600

**4.**

2019

100  
1000



1400  
20MW  
3000  
20  
800  
2000  
100%  
64  
10

			2019	5
			2016	3430
		2016	3096	
2019	4676			
2019	5612			
	+			

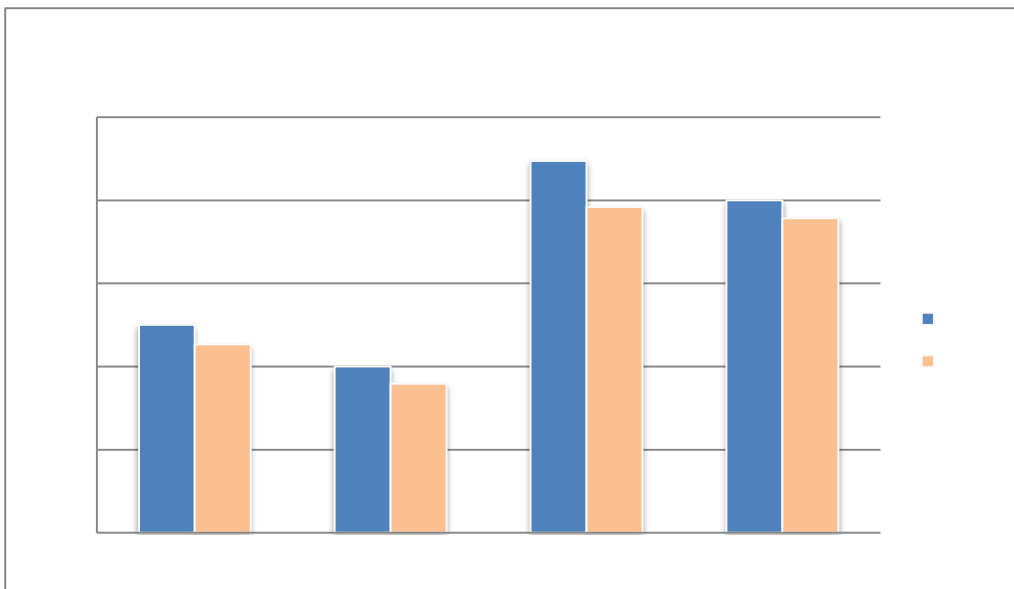
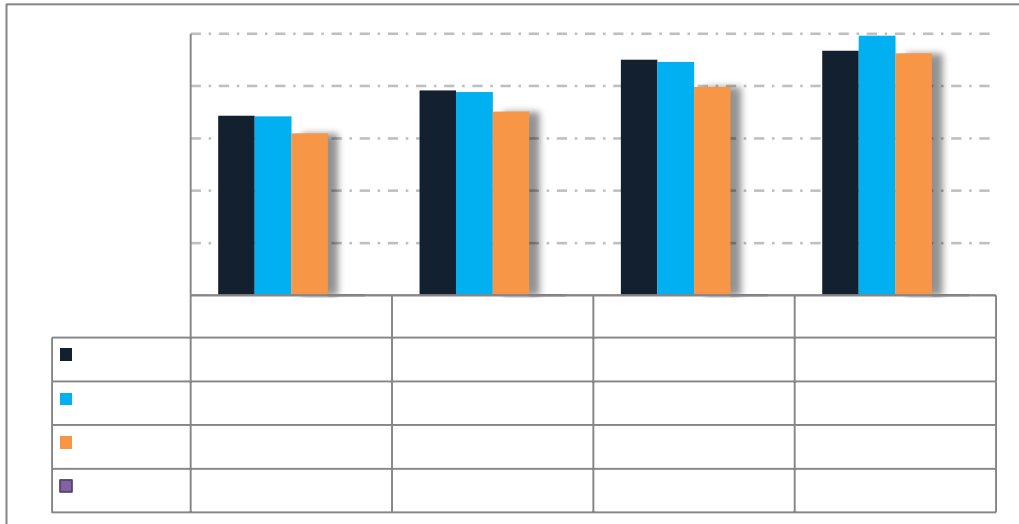
		2019	5612
	944		1999
	136		946
1587			83.18%

	2016	1250	1133	2017
1000	897	2018	2237	1959

2019

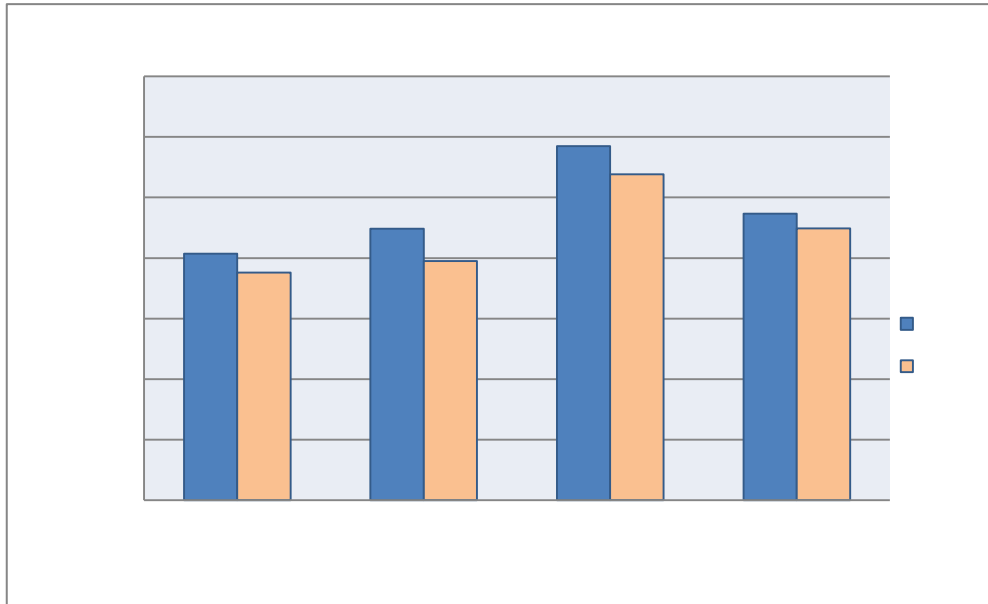
1999

1891



		34		17	
			2016	1310	2018
1580	2016			814	752
	92.38%	2017	897	790	,

88.07%	2018	1169	1076
92.04%	2019	946	898
94.93%			



2019

2019

2019 20

2019

1340

939

865

917

648

1587

400



"

200

"

9935

2

/

"

30

10 3

2016

1500

+

+

28

30 2019

+

1

3 2020

7

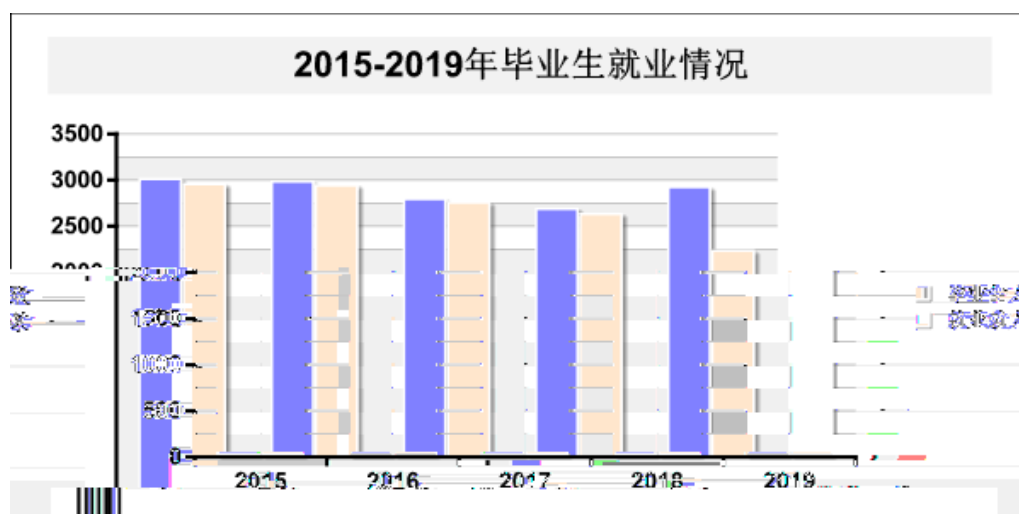
1 2

+ 1

015- 2019

9 1

90





"

2.

50

10

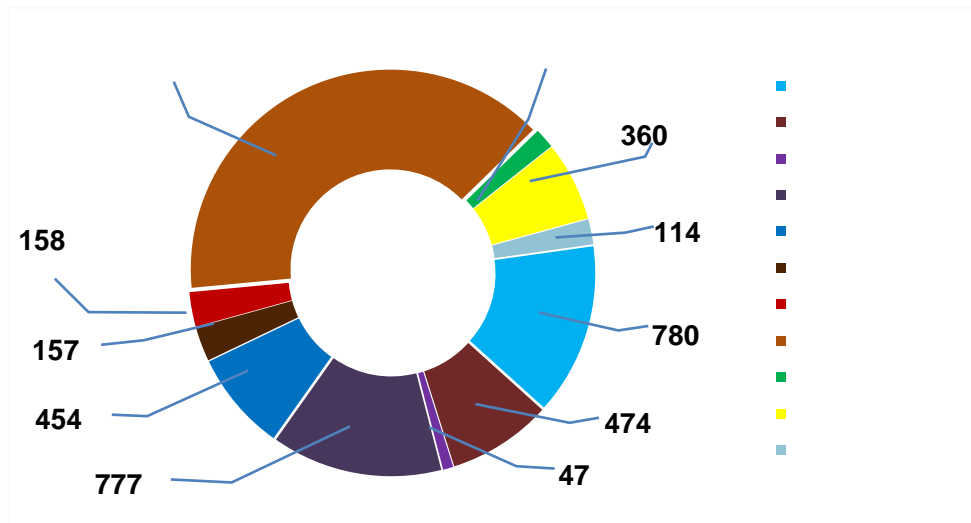
10000

QQ



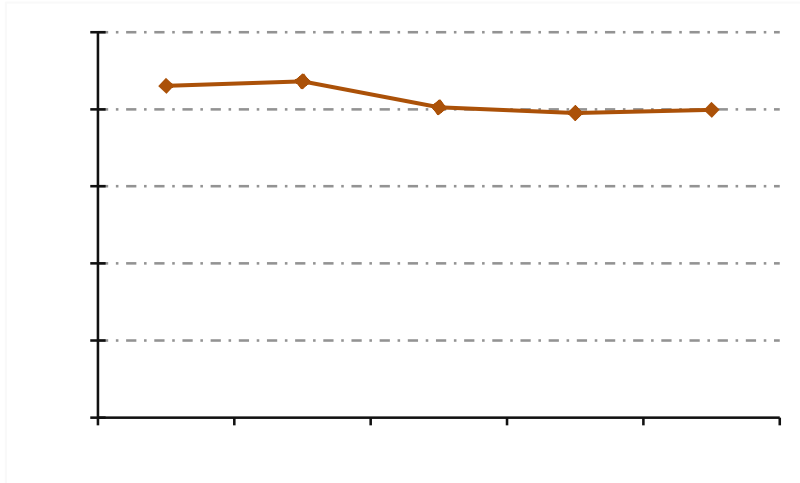
	3		2	
	4			
	7		58	6
12			5	
	2		5	2
		18	8	
8			4975	3
		1120	2018	
	2			1000
1		9		6
	8151.58		135	142
		165	178	

1.	2019	51
		10
	4876	5612
4622	1445	25.75%
	2199	39.18%
	1810	32.25%
	1384	3238
24	7	



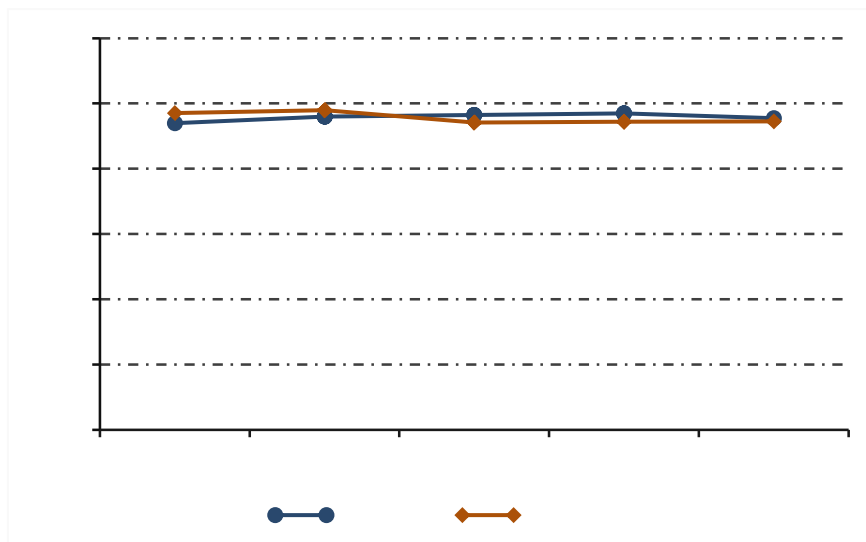
6.1 2019

2.



6.2 2015-2019

4.



5.

2018-2019

11

100%

6.1 2018-2019



**6.** 2019

18

11

+

1 3

+

3

2

1

2

2

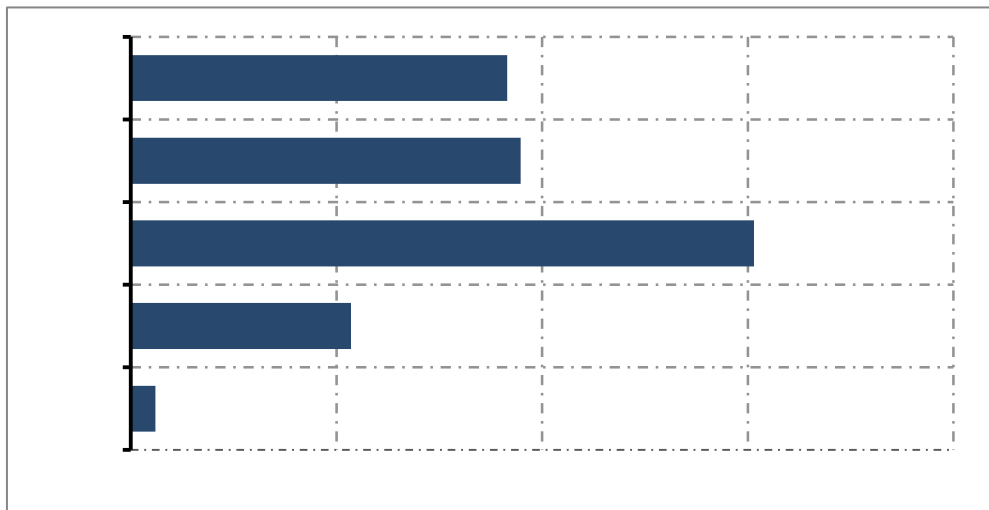
7.

2019

3.66%

2015

3.42



6.4 2015-2019

2





			2017		
246.60	2018	307.1	2019	392	2017
	701.38		2018	145.69	2019
156.46					
<b>1.</b>					
				59	
72		6		2	
				46	
16	25			30	
47					
3	4				
5		4		10	
	8	2			
150		3500		2019	
			50		5
				240	2019
					395
					3+1
				32	
			2085		2019

58	2878	79	
1020	102	49	
	1440 ,	209.7	
			3
135	152	10	
	32	5	
		27	
	134	16	
4	16	7.43	
			2
	4000		
	8		
			20
		2703.78	
	2159		
800		3000	20
2.			

1000 /

500

8


57949

6.3 2017-2019

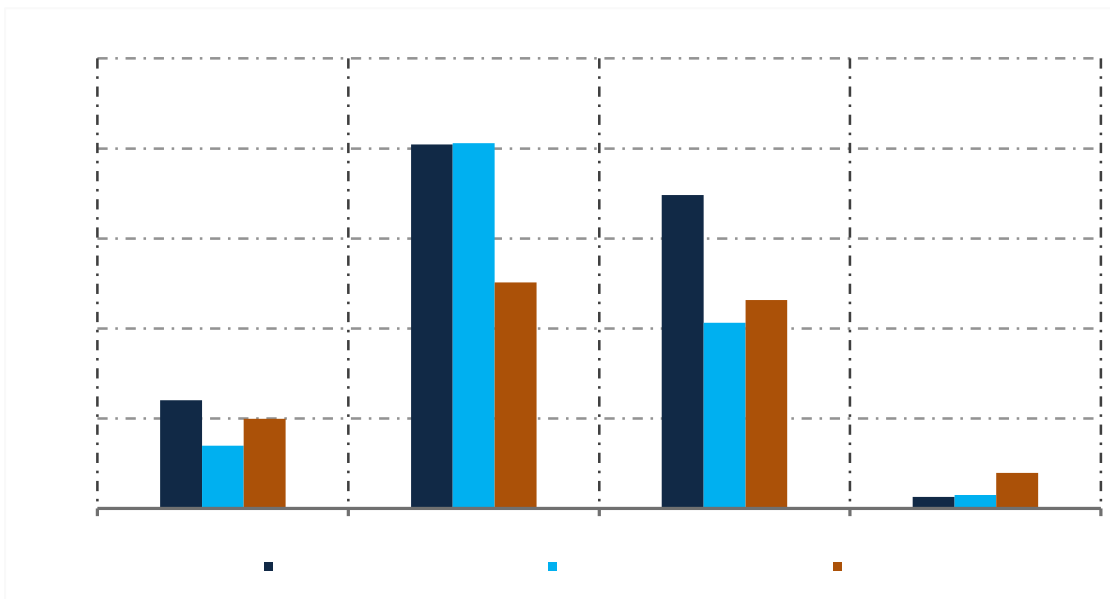

2019

498

17.08%

1256

43.08%



6.5 2017-2019

5000

11

47

500

120

31

13

200

14

6

2

16

+

+

1.

	2019	27	
			31
		26	
7		1	1
2			2
	1		
5			
1	1		5
			9
		7	
	13	1200	3600
2.			

90% 2019  
30



GS

GS

15

3.

40

2019

27

9

7

13

1200

3600

**1.**

45

1		1		5		
	5		1			2
		2		+		
	1					2
		70			1	
				3		8
2				37		
		3				3
						11
	1					N+1
						54
	2019					
3				1		
		43			12	31
			10		2	3
	5				22	

8

1

10

5

3

1

8

2.

3

ZY 2412-8

ZY

BX-12



